

C-Stimme

# In C

Terry Riley (1964)

The image displays the musical score for the C-voice part of the piece 'In C' by Terry Riley. The score is written on 20 staves, each beginning with a measure number (2, 4, 5, 8, 9, 10, 11, 13, 14, 15, 16, 17, 18, 19, 20). The notation is in treble clef and consists of a series of rhythmic patterns and melodic lines. The piece is characterized by its minimalist and repetitive nature, with a focus on rhythm and pitch. The score includes various note values, rests, and dynamic markings, such as accents and slurs. The overall structure is a single melodic line that evolves through a series of rhythmic and melodic motifs.

21



22



23



24



25



26



27



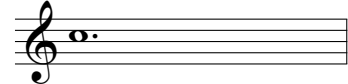
28



29



30



31



32



33



34



35



36



37



